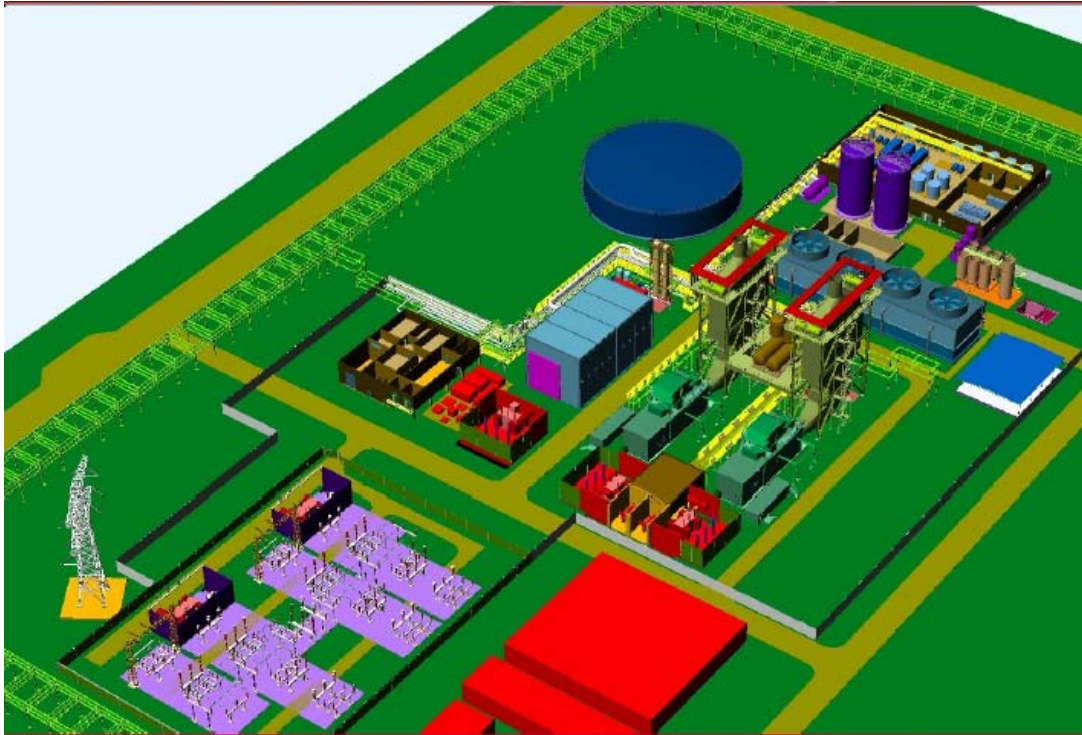


# Inesco CHP Project, Zwijndrecht, Belgium



Siemens Nederland N.V. was contracted to build a CHP plant for Essent Energy on the premises of INEOS N.V. in Zwijndrecht, Belgium . Ineos NV is a leading global manufacturer of specialty and intermediate chemicals. The scope of the project was a CHP, consisting of two GTX-100 Siemens Gas Turbines, HRSG's and one associated Siemens Steam Turbine, a demineralised water plant, 150 kV connection and Ineos interface and connections.

## Client:

Essent Energy, Geertruidenberg, The Netherlands

## Main Data:

- Steam: 70-250 t/hr (average 126 t/hr)
- Demineralised water: 93-460 t/hr
- Electricity: 54-133 MWe
- STEG net efficiency: 51 %
- Net plant total efficiency : ~78 % (average steam supply to Ineos)
- Fuel: natural gas and secondary fuels (fuel oil, EO vent gas, PSA off gas)
- Utilities produced: HHP steam (43 bara, 390 °C), LP steam (8 bara, saturated +10 °C), boiler feed water (53 bara, 131 °C), demineralised water and condensate.

## Execution:

- Start: December, 2003 to be completed by December 2005.

## Services:

- LSTK supply of facilities
- Project Management
- Training
- Construction Management and Site supervision
- Commissioning
- Guarantee period